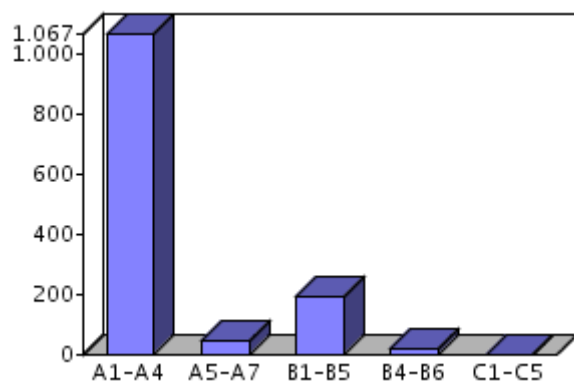


## Overall data

Thank you for filling in the survey!

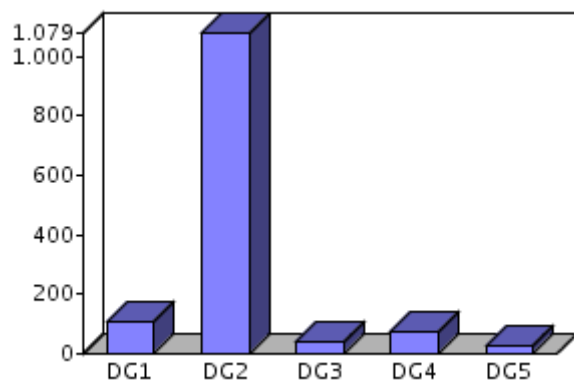
### Are you A-, B- or C-staff?



Item	Count	Percent	Cum. count	Cum. percent
A1-A4	1067	80.35%	1067	80.35%
A5-A7	47	3.54%	1114	83.89%
B1-B5	191	14.38%	1305	98.27%
B4-B6	20	1.51%	1325	99.77%
C1-C5	3	0.23%	1328	100.0%
Total	1328	100%	1328	100%

Total responses: 1328

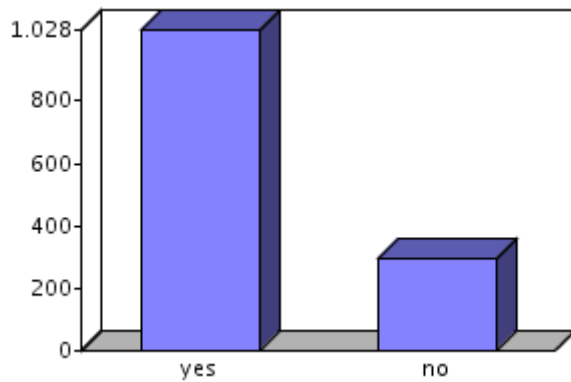
### In which DG are you?



Option	Count	Percent	Cum. count	Cum. percent
1. DG1	111	8.36%	111	8.36%
2. DG2	1079	81.25%	1190	89.61%
3. DG3	38	2.86%	1228	92.47%
4. DG4	73	5.5%	1301	97.97%
5. DG5	27	2.03%	1328	100.0%
Total	1328	100%	1328	100%

Total responses: 1328

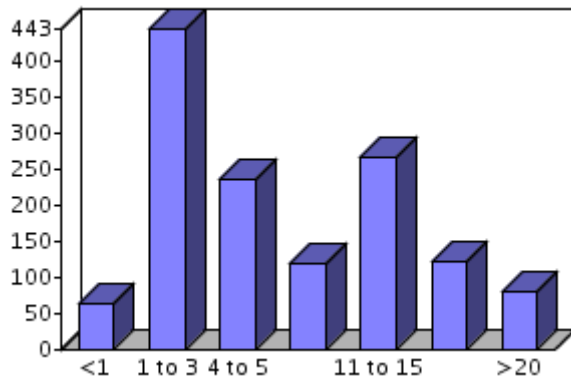
### Are you an examiner?



Option	Count	Percent	Cum. count	Cum. percent
1. yes	1028	77.7%	1028	77.7%
2. no	295	22.3%	1323	100.0%
Total	1323	100%	1323	100%

Total responses: 1323

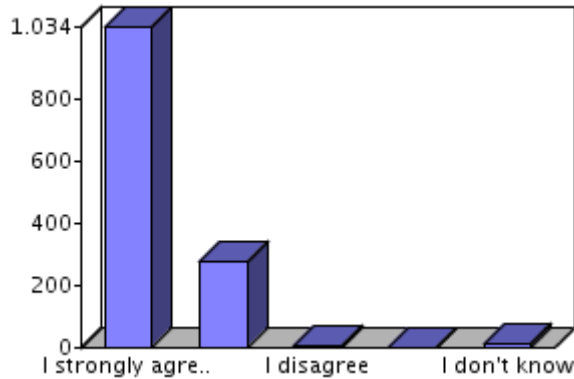
### Years in the Office ?



Option	Count	Percent	Cum. count	Cum. percent
1. <1	64	4.82%	64	4.82%
2. 1 to 3	443	33.36%	507	38.18%
3. 4 to 5	235	17.7%	742	55.87%
4. 6 to 10	120	9.04%	862	64.91%
5. 11 to 15	265	19.95%	1127	84.86%
6. 16 to 20	121	9.11%	1248	93.98%
7. >20	80	6.02%	1328	100.0%
Total	1328	100%	1328	100%

Total responses: 1328

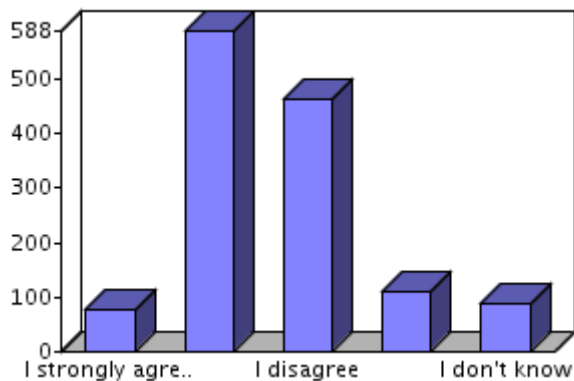
**The high quality of the granted patents is essential for the proper functioning of the patent system and thus for the future of the EPO.**



Option	Count	Percent	Cum. count	Cum. percent
1. I strongly agree	1034	77.86%	1034	77.86%
2. I agree	275	20.71%	1309	98.57%
3. I disagree	7	0.53%	1316	99.1%
4. I strongly disagree	2	0.15%	1318	99.25%
5. I don't know	10	0.75%	1328	100.0%
Total	1328	100%	1328	100%

Total responses: 1328

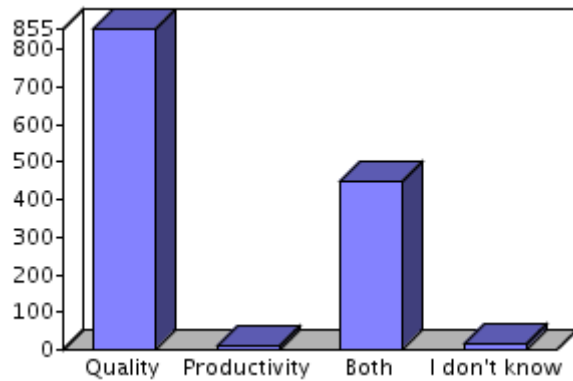
**A high productivity is essential for the proper functioning of the patent system and thus for the future of the Office.**



Option	Count	Percent	Cum. count	Cum. percent
1. I strongly agree	77	5.8%	77	5.8%
2. I agree	588	44.31%	665	50.11%
3. I disagree	464	34.97%	1129	85.08%
4. I strongly disagree	109	8.21%	1238	93.29%
5. I don't know	89	6.71%	1327	100.0%
Total	1327	100%	1327	100%

Total responses: 1327

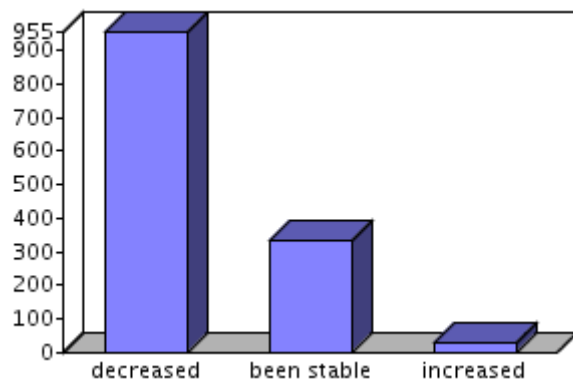
**What is more relevant for the proper functioning of the patent system and thus for the future of the EPO: high quality or high productivity ?**



Option	Count	Percent	Cum. count	Cum. percent
1. Quality	855	64.43%	855	64.43%
2. Productivity	9	0.68%	864	65.11%
3. Both	449	33.84%	1313	98.94%
4. I don't know	14	1.06%	1327	100.0%
Total	1327	100%	1327	100%

Total responses: 1327

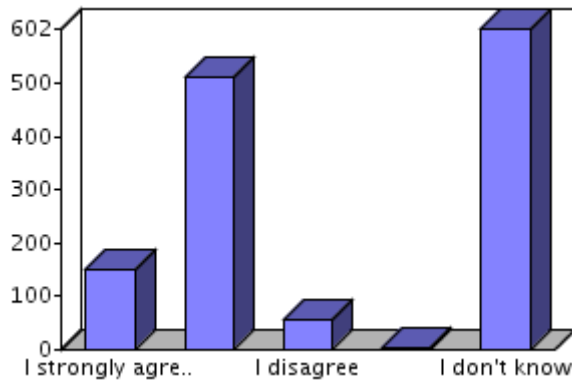
**In your opinion, during the last two years the average quality of a granted European Patent has ...**



Option	Count	Percent	Cum. count	Cum. percent
1. decreased	955	72.57%	955	72.57%
2. been stable	332	25.23%	1287	97.8%
3. increased	29	2.2%	1316	100.0%
Total	1316	100%	1316	100%

Total responses: 1315

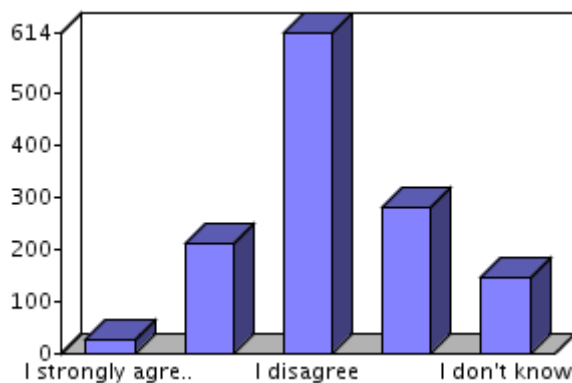
**During the last two years criticism from applicants/representatives on the quality and consistency of the EPO's searches and examinations has increased.**



Option	Count	Percent	Cum. count	Cum. percent
1. I strongly agree	152	11.48%	152	11.48%
2. I agree	510	38.52%	662	50.0%
3. I disagree	58	4.38%	720	54.38%
4. I strongly disagree	2	0.15%	722	54.53%
5. I don't know	602	45.47%	1324	100.0%
Total	1324	100%	1324	100%

Total responses: 1324

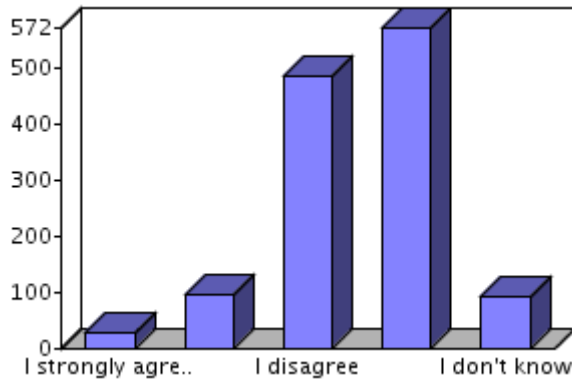
**The present productivity demands still allow enforcement of the quality standards set by the EPC.**



Option	Count	Percent	Cum. count	Cum. percent
1. I strongly agree	26	2.03%	26	2.03%
2. I agree	212	16.59%	238	18.62%
3. I disagree	614	48.04%	852	66.67%
4. I strongly disagree	280	21.91%	1132	88.58%
5. I don't know	146	11.42%	1278	100.0%
Total	1278	100%	1278	100%

Total responses: 1278

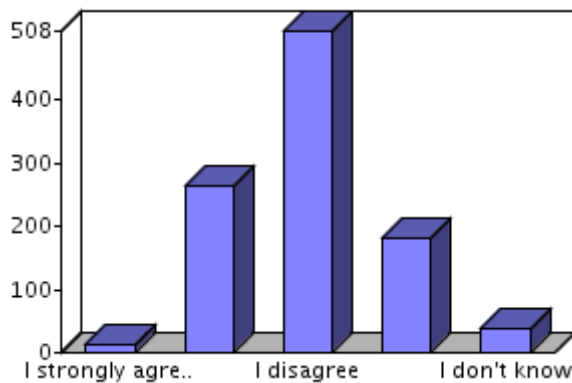
The present productivity demands still allow sufficient time for keeping up with jurisprudence, changes in procedures, changes in the databases, technical literature, (for line managers: good human resource management) etc.



Option	Count	Percent	Cum. count	Cum. percent
1. I strongly agree	28	2.19%	28	2.19%
2. I agree	98	7.67%	126	9.86%
3. I disagree	486	38.03%	612	47.89%
4. I strongly disagree	572	44.76%	1184	92.64%
5. I don't know	94	7.36%	1278	100.0%
Total	1278	100%	1278	100%

Total responses: 1278

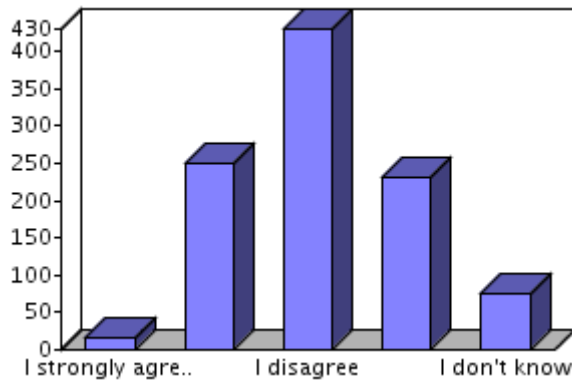
The present time available per file (Pro-Pro II) allows me to do my work as a first examiner in a satisfactory manner.



Option	Count	Percent	Cum. count	Cum. percent
1. I strongly agree	14	1.4%	14	1.4%
2. I agree	262	26.15%	276	27.54%
3. I disagree	508	50.7%	784	78.24%
4. I strongly disagree	181	18.06%	965	96.31%
5. I don't know	37	3.69%	1002	100.0%
Total	1002	100%	1002	100%

Total responses: 1002

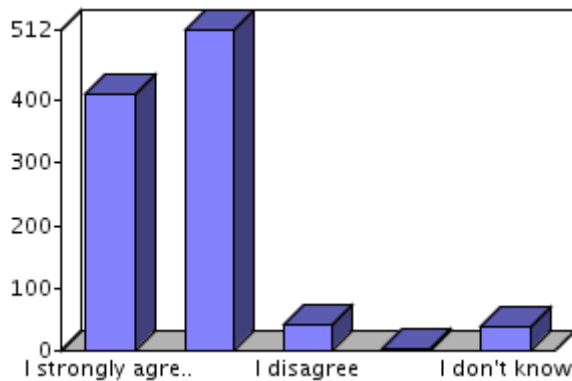
The present time available per file (Pro-Pro II) allows me to do my work as a second examiner or chairman examiner in a satisfactory manner.



Option	Count	Percent	Cum. count	Cum. percent
1. I strongly agree	17	1.7%	17	1.7%
2. I agree	250	24.95%	267	26.65%
3. I disagree	430	42.91%	697	69.56%
4. I strongly disagree	231	23.05%	928	92.61%
5. I don't know	74	7.39%	1002	100.0%
Total	1002	100%	1002	100%

Total responses: 1002

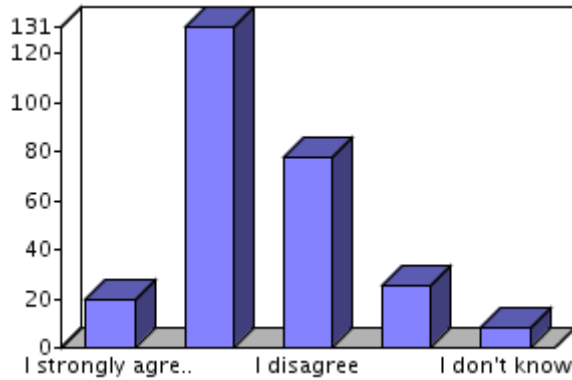
Active involvement of the Examining Division contribute to higher quality of the granted patent.



Option	Count	Percent	Cum. count	Cum. percent
1. I strongly agree	409	40.7%	409	40.7%
2. I agree	512	50.95%	921	91.64%
3. I disagree	42	4.18%	963	95.82%
4. I strongly disagree	4	0.4%	967	96.22%
5. I don't know	38	3.78%	1005	100.0%
Total	1005	100%	1005	100%

Total responses: 1005

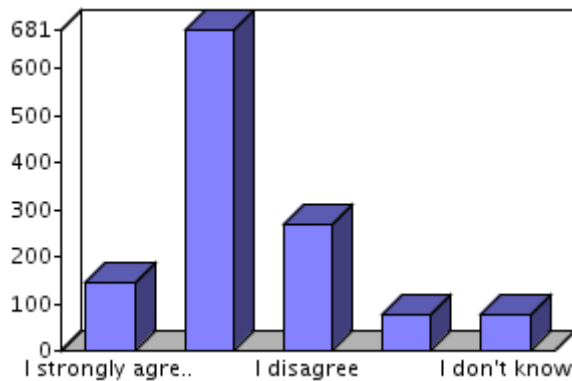
**The present work load allows me to do my work in a satisfactory manner.**



Option	Count	Percent	Cum. count	Cum. percent
1. I strongly agree	20	7.63%	20	7.63%
2. I agree	131	50.0%	151	57.63%
3. I disagree	78	29.77%	229	87.4%
4. I strongly disagree	25	9.54%	254	96.95%
5. I don't know	8	3.05%	262	100.0%
Total	262	100%	262	100%

Total responses: 262

**I am satisfied that the initial courses and training on the job have allowed me to achieve a consistent high level of quality.**



Option	Count	Percent	Cum. count	Cum. percent
1. I strongly agree	144	11.56%	144	11.56%
2. I agree	681	54.65%	825	66.21%
3. I disagree	268	21.51%	1093	87.72%
4. I strongly disagree	78	6.26%	1171	93.98%
5. I don't know	75	6.02%	1246	100.0%
Total	1246	100%	1246	100%

Total responses: 1246